

STEINER

LT465A

6.5 Tonne Hydraulic 4 Post Alignment Hoist



LONG RUNWAY ALIGNMENT HOIST



Ideal for:

Workshops and service centres that require a strong lift able to accommodate vehicles with a longer wheelbase.

Features:

- » 6224mm Runway length (excluding ramp length).
- » Adjustable turntable positions to accommodate different wheelbases.
- » Cable driven electric hydraulic power system.
- » Electric-air controls.
- » Mechanical self-lock with air driven safety release.
- » Dual safety device acts as back up to mechanical locks.
- » Controls can be mounted to either side.

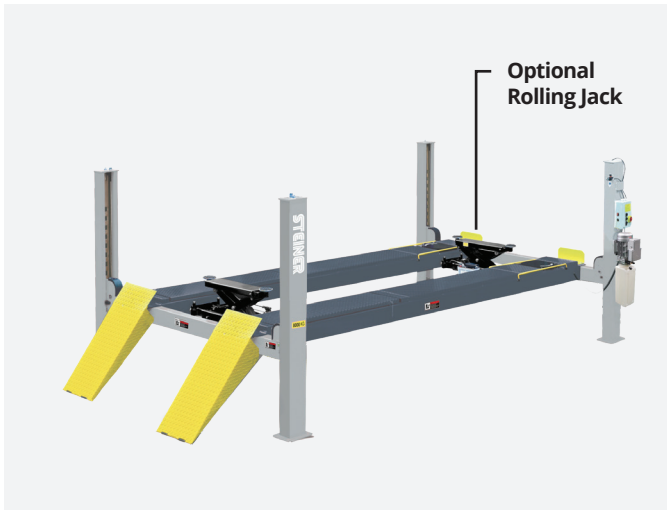
OUR PROMISE:
100
ONE HUNDRED DAYS
100% SATISFACTION

If you are not 100% satisfied with your equipment, Treadway Equipped will repair, replace or refund the equipment free of charge within the first 100 days.

LT465A

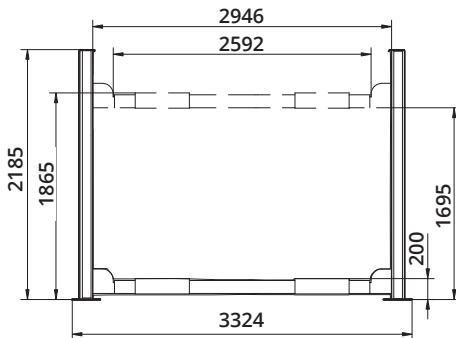
6.5 Tonne Hydraulic 4 Post Commercial Lift

STEINER



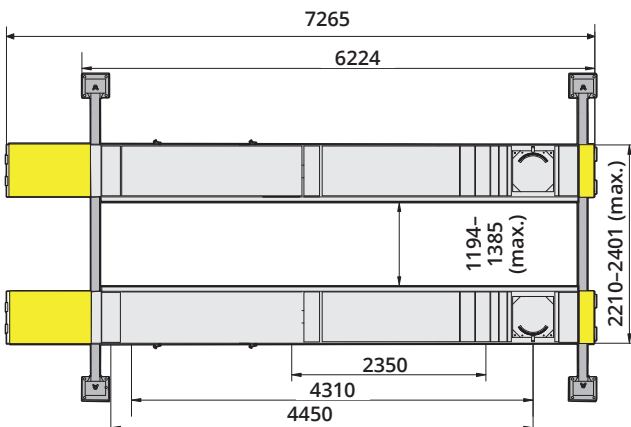
Features:

- » 6224mm Runway length (excluding ramp length).
- » Adjustable turntable positions to accommodate different wheelbases.
- » Cable driven electric hydraulic power system.
- » Electric-air controls.
- » Mechanical self-lock with air driven safety release.
- » Dual safety device acts as back up to mechanical locks.
- » Controls can be mounted to either side.



SPECIFICATIONS

Lifting capacity	6500kg
Lifting time	76 Sec
Overall Length (Inc. Ramps)	7265mm
Overall Length (No Ramps)	6224mm
Overall Width	3324mm
Width Between Posts	2946mm
Max. Lifting height	1865mm
Overall Height	2185mm
Minimum Height	200mm
Max. Underneath Height	1695mm
Drive-Thru Clearance	2592mm
Width Between Runway	1194mm-Max. 1385mm
Outside Edge of Runways	2210mm-Max.2401mm
Motor	4.0HP
Gross Weight	1345kg

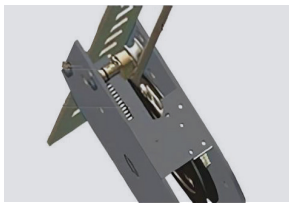


LT465A

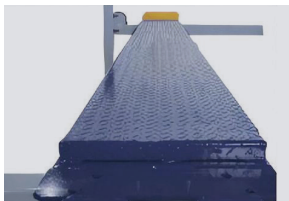
6.5 Tonne Hydraulic 4 Post Alignment Hoist

Long runway alignment hoist

Safety & design



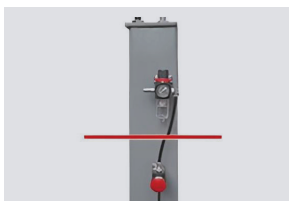
- › **Safety**
Dual safety device acts as backup to mechanical locks.



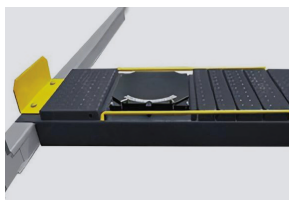
- › **Safety**
Non-slip diamond platforms come as standard.



- › **Control box**
Electric control device with UP, LOCK and DOWN.



- › **Design**
Oil-water separator and solenoid air valve are installed on the power side column.



- › **Adjustable turnplate blocks**
Adjustable turnplate blocks to fit various wheel bases vehicles.



- › **Flexibility**
Controls can be mounted on either side of the hoist.

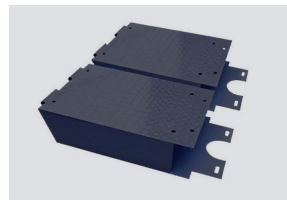
Options



- › **Optional**
Rolling Jack - manual hydraulic type 3,500 kg.



- › **Optional**
Air Line Kit - for rolling jack equipped hoists.



- › **Optional**
Platform Extension Kit - adds an extra 660mm length to the platform.



- › **Optional**
Turnplates - set of two (one set required per hoist).



- › **Optional**
Adjustable blocks - used with the platform extension kit.



OUR PROMISE:

100

ONE HUNDRED DAYS
100% SATISFACTION

If you are not 100% satisfied with your equipment, Treadway Equipped will repair, replace or refund the equipment free of charge within the first 100 days.

0800 436 436
treadwayequipped.co.nz